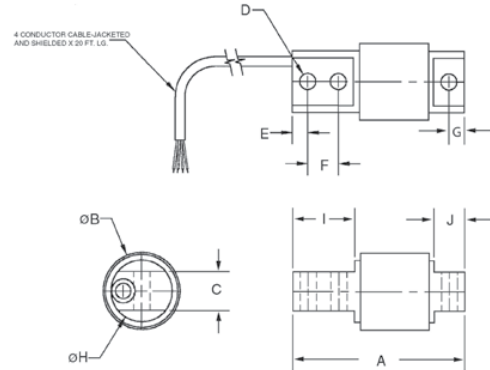


RL50210SS Single-Ended Beam, Stainless Steel, IP65



Picture is a representation of actual product



SPECIFICATIONS

Full Scale Output:
3.0 mV/V

Bridge Resistance:
350 ohms, nominal

Material/Finish:
Stainless steel

Temperature:
Compensated range
0°F to 150°F/-18°C to 65°C

Safe Overload:
150% Full scale

Rated Excitation:
10V DC (15V maximum)

Nonlinearity:
0.03% Full scale

Hysteresis:
0.02% Full scale

Insulation Resistance:
5000 megohms

Deflection at Capacity:

25-50 lb=.008"/.20 mm,
100 lb=.010"/.25 mm,
150 lb=.012"/.30 mm,
250 lb=.016"/.41 mm,
500 lb=.025"/.64 mm

Seal Type:

Environmentally sealed stainless steel sleeve, IP65

Cable Length:

20'/6.1 m

Cable Diameter:

.200 PVC jacket

Cable Color Code:

Red.....+ Excitation
Black.....- Excitation
Green.....+ Signal
White.....- Signal

Warranty:

Two-year limited warranty

Approvals:



DIMENSIONS

RATED CAPACITY	A	B	C	D	E	F	G	H	I	J
lb/inches										
25-500	2.81	1.30	.62	.26	.25	.50	1.81	1.00	1.00	.50
kg/mm										
11.3-226.8	71.4	33.0	15.8	6.6	6.4	12.7	46.0	25.4	25.4	12.7

ORDER INFORMATION

LOAD RATING	PART #	PRICE
25 lb (11.3 kg)	53209	Consult
50 lb (22.7 kg)	53210	Consult
75 lb (34.0 kg)	53211	Consult
100 lb (45.4 kg)	53212	Consult
150 lb (68.0 kg)	53213	Consult
250 lb (113.4 kg)	53214	Consult
500 lb (226.8 kg)	53215	Consult

INTERCHANGEABLE PRODUCTS

MANUFACTURER	MODEL	PAGE #
VPG Sensortronics	60040	310
Artech®	50210	—
VPG Revere Transducers	5503	—

WEIGH MODULE AVAILABLE

MANUFACTURER	MODEL	PAGE #
Rice Lake Weighing Systems	RL50210 TA	136

RICE LAKE WEIGHING SYSTEMS

